



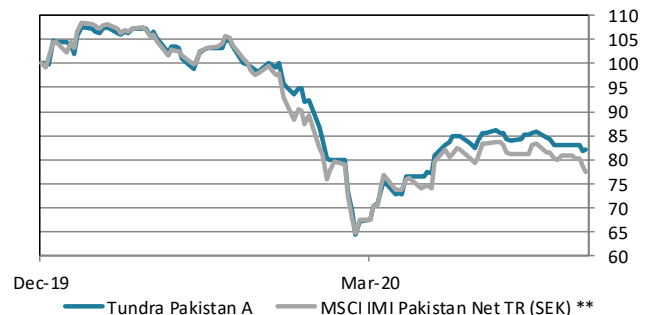
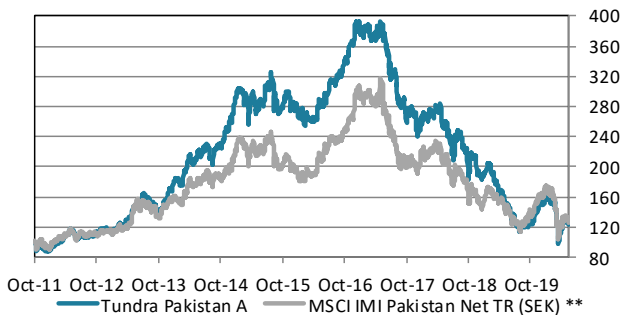
ABOUT THE FUND

Tundra Pakistan Fund is a Pakistan specific equity fund, focusing on the world's 6th most populous country, home to more than 200m people. Pakistan's international media image has been that of a hotbed of terrorism and instability. Tundra, however, has found a young, skilled, fast-growing population, and some of the most exciting and cheap companies we have encountered during our years in emerging and frontier markets. Almost 600 companies are listed on the Pakistan Stock Exchange. Despite long term performance in line with the Indian equity market, valuations are still among the lowest in the world. The fund is managed according to Tundra's active stock picking philosophy. Investments are based on an ESG approach. Each investment must comply with the UN Global Compact with respect to human rights, labour rights, corporate governance and environmental impacts. The fund is registered in Sweden and is fully UCITS compliant. Read more about latest developments [here](#).

Return	NAV(SEK)	1 month	YTD	1 year	3 year	Inception
Tundra Pakistan A	124.84	-4.2%	-18.0%	-17.5%	-67.1%	24.8%
Benchmark **	10775.53	-7.1%	-22.6%	-16.3%	-56.7%	24.9%

The fund vs benchmark (since inception)

The fund vs benchmark (YTD)



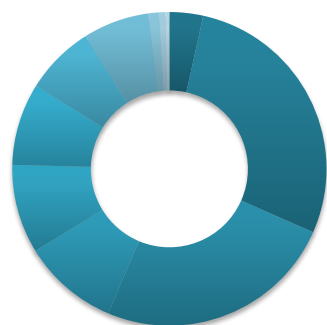
Fund monthly performance

	Jan	Feb	Mar	Apr	May	Jun	Jul	Aug	Sep	Oct	Nov	Dec	YTD
2011										-6.2%	-1.0%	-5.7%	-12.5%
2012	7.1%	5.2%	6.8%	4.5%	1.7%	-7.2%	4.2%	1.6%	-1.9%	5.3%	4.1%	-2.2%	32.3%
2013	-0.4%	8.1%	-0.9%	6.8%	13.6%	-1.4%	9.4%	-9.4%	-4.1%	1.9%	8.9%	7.5%	44.8%
2014	9.7%	-4.9%	13.6%	4.3%	6.5%	0.2%	3.2%	-8.0%	8.1%	4.2%	5.3%	8.0%	60.6%
2015	12.2%	-3.4%	-7.7%	6.1%	-1.0%	1.6%	7.0%	-3.5%	-7.8%	5.7%	-3.2%	-1.1%	2.8%
2016	-2.2%	-3.0%	-0.8%	2.1%	5.3%	5.4%	5.7%	2.9%	2.3%	2.9%	6.7%	5.8%	37.9%
2017	-2.7%	1.9%	-1.7%	2.0%	-0.1%	-9.8%	-5.9%	-11.7%	2.3%	-7.9%	-0.1%	-7.1%	-34.9%
2018	6.0%	3.1%	1.6%	1.2%	-8.0%	-6.9%	-1.7%	1.1%	-6.1%	-2.5%	-7.1%	-9.1%	-26.0%
2019	7.1%	-3.6%	-5.9%	-6.8%	-9.1%	-12.9%	-7.0%	-1.2%	0.7%	4.4%	16.6%	2.5%	-17.3%
2020	5.5%	-6.8%	-28.5%	21.7%	-4.2%								-18.0%

Source: Bloomberg, MSCI, Tundra Fonder

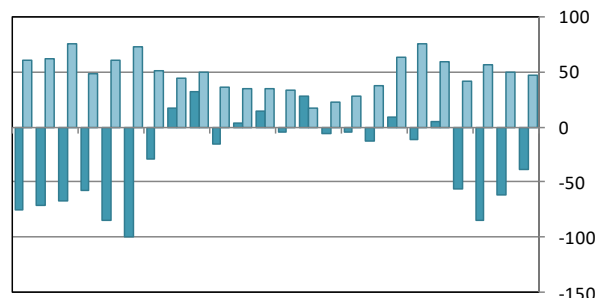
Capital invested in a fund may either increase or decrease in value and it is not certain that you will be able to recover all of your investment. Historical return is no guarantee of future return. The value of invested capital may vary substantially due to the composition of the fund and the investment process used by the fund manager. The Full Prospectus, KIID etc. are available on our homepage. You can also contact us to receive the documents free of charge. See full disclaimer on www.tundrafonder.se.

Sector allocation



■ Cash and other 3%
■ Materials 28%
■ Financials 25%
■ Energy 10%
■ Health Care 9%
■ Utilities 8%
■ Consumer Disc. 7%
■ Information Tech. 7%
■ Industrials 1%
■ Real Estate 1%
■ Consumer Staples 0%
■ Communication Services 0%

Foreign flows & daily turnover



Jun-18 Sep-18 Dec-18 Mar-19 Jun-19 Sep-19 Dec-19 Mar-20

■ Net foreign portfolio inflow, Pakistan (USDm)
■ Avg daily traded value, Pakistan (USDm)

Largest holdings	Portfolio weight	Country	P/E 20E	P/E 21E	Yield	Return 1M (SEK)
Systems Ltd	6.8%	Pakistan	11.6	10.7	2.2%	5.0%
Hub Power Co Ltd	6.5%	Pakistan	4.6	3.6	4.0%	-11.8%
Habib Bank Ltd	5.4%	Pakistan	5.6	4.7	6.8%	-9.1%
Lucky Cement Ltd	5.4%	Pakistan	26.9	13.7	0.6%	-7.1%
United Bank Ltd	5.2%	Pakistan	5.3	4.5	10.6%	-12.7%
Abbott Laboratories (Pak) Ltd	4.9%	Pakistan	-	-	-	5.7%
Engro Corporation Ltd	4.3%	Pakistan	7.1	6.7	8.6%	-10.0%
D.G. Khan Cement Co Ltd	3.9%	Pakistan	-	46.3	0.2%	-9.5%
MCB Bank Ltd	3.7%	Pakistan	6.7	6.3	10.9%	-12.2%
Meezan Bank Ltd	3.7%	Pakistan	4.6	5.0	7.8%	-11.4%

Best performers in May	Return (SEK)	Worst performers in May	Return (SEK)
Gen Tyre & Rubber Co (Pak) Ltd	18.7%	United Bank Ltd	-12.7%
Abbott Laboratories (Pak) Ltd	5.7%	Maple Leaf Cement Factory Ltd	-12.6%
Systems Ltd	5.0%	MCB Bank Ltd	-12.2%
Oil & Gas Development Co Ltd	3.3%	Hub Power Co Ltd	-11.8%
Fauji Fertilizer Bin Qasim Ltd	1.7%	Meezan Bank Ltd	-11.4%

Facts		Risks and costs	
Inception date	2011-10-14	Active risk (Tracking error)	13.1%
Inception price	100.0	Active share	55.0%
Pricing	Daily	Standard deviation	33.2%
Manager	Tundra Fonder AB	Standard deviation, benchmark	34.5%
Benchmark index **	MSCI IMI Pakistan Net TR (SEK)	Beta	0.89
Bank account	SEB 5851-10 76190	Information ratio	-0.46
ISIN	SE0004211308	Holdings	37
Bloomberg	TUNDPK SS	Risk level	6 of 7 (refer to KIID for more info)
Share classes currencies	SEK, USD, EUR	Management fee/year	2.5%
Dividend	No dividend	AuM	112.6 MSEK

* Risk indicators are based on monthly rolling 24 months of return data. ** The fund changed benchmark April 1st, 2019

Source: Bloomberg, MSCI, Tundra Fonder

Capital invested in a fund may either increase or decrease in value and it is not certain that you will be able to recover all of your investment. Historical return is no guarantee of future return. The value of invested capital may vary substantially due to the composition of the fund and the investment process used by the fund manager. The Full Prospectus, KIID etc. are available on our homepage. You can also contact us to receive the documents free of charge. See full disclaimer on www.tundrafonder.se.