



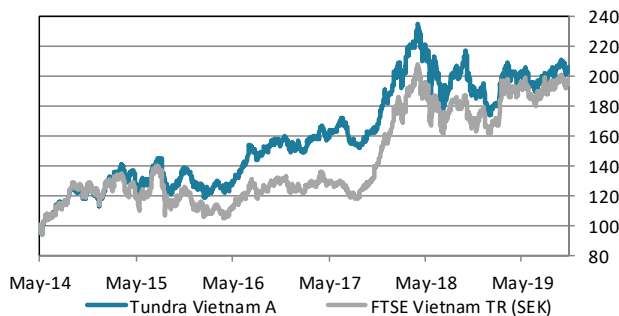
ABOUT THE FUND

Vietnam is one of the fastest growing economies in South East Asia. Following the economic and political reforms under the Doi Moi Policy, launched in 1986, rapid economic growth and development transformed Vietnam from one of the world's poorest nations to a lower middle-income country. With a population of almost 100m and a high literacy rate, the country offers an attractive labour market. Vietnam has successfully attracted a large amount of Foreign Direct Investment (FDI) and has turned into a key manufacturing hub of mobile phones and other electronic products.

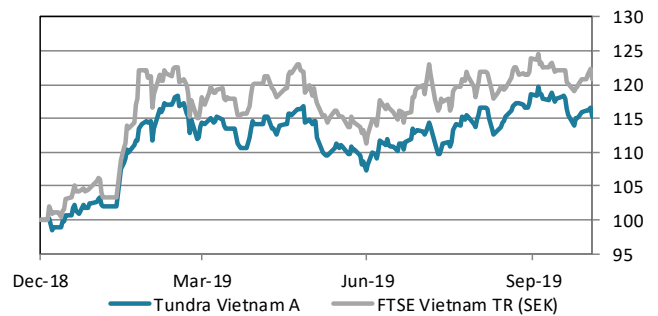
The fund is managed according to Tundra's active stock picking philosophy and backed by a research office in Ho Chi Minh. Investments are based on an ESG approach where each investment has to comply with the UN Global Compact with regards to human rights, labour rights, corporate governance and environmental impacts. The fund is registered in Sweden and is fully UCITS compliant. Read more about latest developments [here](#).

Return	NAV(SEK)	1 month	YTD	1 year	3 year	Inception
Tundra Vietnam A	203.47	-2.8%	15.2%	5.1%	29.6%	103.5%
Benchmark	3583.17	-2.3%	20.7%	14.0%	49.3%	95.3%

The fund vs benchmark (since inception)



The fund vs benchmark (YTD)



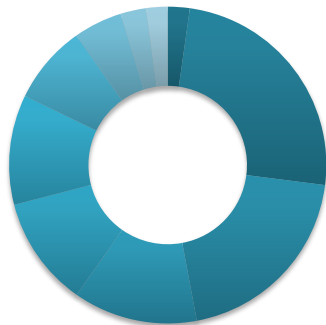
Fund monthly performance

	Jan	Feb	Mar	Apr	May	Jun	Jul	Aug	Sep	Oct	Nov	Dec	YTD
2014					7.3%	0.5%	6.0%	8.6%	-1.4%	2.5%	-3.8%	-2.5%	17.6%
2015	11.2%	3.1%	-2.7%	2.6%	-2.9%	0.2%	8.1%	-10.3%	-1.2%	9.0%	-3.8%	-3.2%	8.3%
2016	-1.1%	1.0%	-3.2%	3.1%	6.9%	7.3%	2.6%	2.0%	3.0%	0.0%	-0.6%	-3.6%	18.1%
2017	0.3%	4.5%	3.2%	-2.8%	2.9%	2.6%	-6.5%	-1.6%	5.9%	0.5%	12.7%	2.9%	26.1%
2018	8.1%	6.6%	2.3%	-3.0%	-8.1%	-2.3%	-3.0%	8.4%	4.0%	-9.1%	-3.1%	-5.9%	-7.0%
2019	2.2%	9.4%	2.1%	0.1%	-1.8%	-3.6%	4.7%	3.0%	1.6%	-2.8%			15.2%

Source: Bloomberg, MSCI, Tundra Fonder

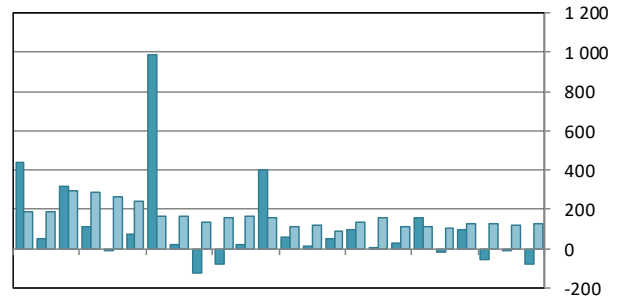
Capital invested in a fund may either increase or decrease in value and it is not certain that you will be able to recover all of your investment. Historical return is no guarantee of future return. The value of invested capital may vary substantially due to the composition of the fund and the investment process used by the fund manager. The Full Prospectus, KIID etc. are available on our homepage. You can also contact us to receive the documents free of charge. See full disclaimer on www.tundrafonder.se.

Sector allocation



- Cash and other 2%
- Financials 25%
- Real Estate 20%
- Materials 13%
- Consumer Staples 11%
- Consumer Disc. 11%
- Information Tech. 8%
- Energy 5%
- Industrials 3%
- Health Care 2%
- Utilities 0%
- Communication Services 0%

Foreign flows & daily turnover



Nov-17 Feb-18 May-18 Aug-18 Nov-18 Feb-19 May-19 Aug-19

■ Net foreign portfolio inflow, Vietnam (USDm)
■ Avg daily traded value, Vietnam (USDm)

Largest holdings	Portfolio weight	Country	P/E 19E	P/E 20E	Yield	Return 1M (SEK)
FPT Corp	8.1%	Vietnam	12.4	10.7	3.3%	-1.5%
Masan Group Corp	5.9%	Vietnam	18.4	15.5	1.0%	-7.2%
Vinhomes Jsc	5.3%	Vietnam	16.3	11.2	1.2%	-2.2%
Dat Xanh Real Estate Service	5.1%	Vietnam	5.7	5.4	3.2%	-13.1%
Bank for Foreign Trade JSC	4.7%	Vietnam	19.9	15.3	0.9%	4.9%
Hoa Sen Group	4.5%	Vietnam	6.6	7.7	14.0%	4.8%
Vingroup JSC	4.4%	Vietnam	70.4	45.1	-	-2.5%
Vietnam JS Commercial Bank	3.7%	Vietnam	12.6	11.2	3.1%	2.1%
Lien Viet Post Bank JSC	3.6%	Vietnam	6.5	-	-	-0.5%
Phu Nhuan Jewelry JSC	3.5%	Vietnam	16.7	14.0	2.1%	1.7%

Best performers in October	Return (SEK)	Worst performers in October	Return (SEK)
Kido Frozen Foods JSC	13.9%	TNG Investment & Trading JSC	-17.5%
Ha Tien 1 Cement JSC	10.2%	Dat Xanh Real Estate Service	-13.1%
Bank for Foreign Trade JSC	4.9%	Vietnam Electrical Equipment	-9.0%
Hoa Sen Group	4.8%	LDG Investment JSC	-8.7%
Southern Gas Trading JSC	3.1%	VNDIRECT Securities Corp	-7.6%

Facts		Risks and costs	
Inception date	2014-05-06	Active risk (Tracking error)	6.8%
Inception price	100.0	Active share **	78.9%
Pricing	Daily	Standard deviation	18.9%
Manager	Tundra Fonder AB	Standard deviation, benchmark	19.0%
Benchmark index	FTSE Vietnam TR (SEK)	Beta	0.93
Bank account	SEB 5851-11 03805	Information ratio	-1.25
ISIN	SE0005797099	Holdings	35
PPM	762823	Risk level	6 of 7 (refer to KIID for more info)
Bloomberg	TUNDVIE SS	Management fee/year	2.5%
Share classes currencies	SEK, USD, EUR	Dividend	No dividend
AuM	436.7 MSEK		

* Risk indicators are based on monthly rolling 24 months of return data. ** Based on available index proxy.

Source: Bloomberg, MSCI, Tundra Fonder

Capital invested in a fund may either increase or decrease in value and it is not certain that you will be able to recover all of your investment. Historical return is no guarantee of future return. The value of invested capital may vary substantially due to the composition of the fund and the investment process used by the fund manager. The Full Prospectus, KIID etc. are available on our homepage. You can also contact us to receive the documents free of charge. See full disclaimer on www.tundrafonder.se.