



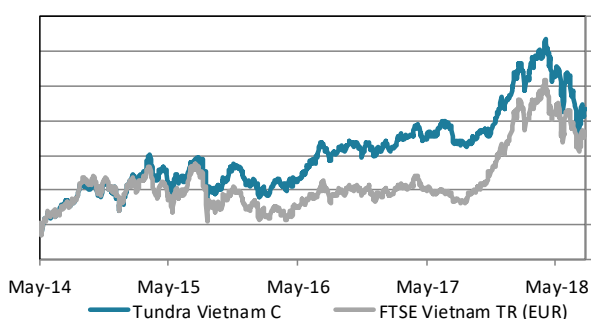
### ABOUT THE FUND

Vietnam is one of the fastest growing economies in South East Asia. Following the economic and political reforms under the Doi Moi Policy, launched in 1986, rapid economic growth and development transformed Vietnam from one of the world's poorest nations to a lower middle-income country. With a population of almost 100m and a high literacy rate, the country offers an attractive labour market. Vietnam has successfully attracted a large amount of Foreign Direct Investment (FDI) and has turned into a key manufacturing hub of mobile phones and other electronic products.

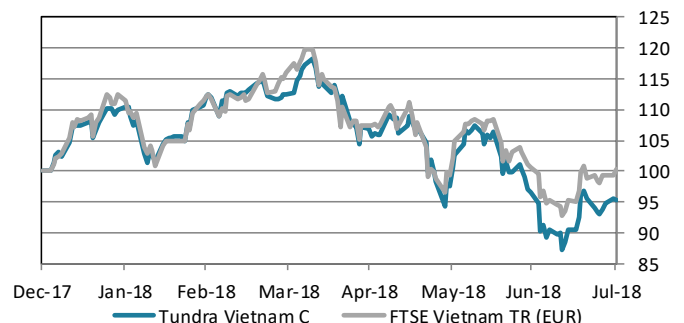
The fund is managed according to Tundra's active stock picking philosophy and backed by a research office in Ho Chi Minh. Investments are based on an ESG approach where each investment has to comply with the UN Global Compact with regards to human rights, labour rights, corporate governance and environmental impacts. The fund is registered in Sweden and is fully UCITS compliant. Read more about latest developments [here](#).

Return	NAV (EUR)	1 month	YTD	1 year	3 year	Inception
Tundra Vietnam C	18.40	-1.2%	-4.6%	12.4%	23.0%	66.9%
Benchmark	310.78	-0.2%	0.4%	33.5%	17.9%	53.5%

The fund vs benchmark (since inception)



The fund vs benchmark (YTD)



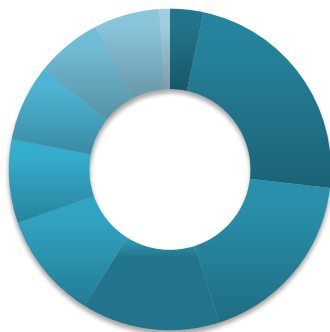
### Fund monthly performance

	Jan	Feb	Mar	Apr	May	Jun	Jul	Aug	Sep	Oct	Nov	Dec	YTD
<b>2014</b>					7.0%	-0.3%	5.2%	9.4%	-0.9%	0.9%	-3.8%	-4.3%	13.0%
<b>2015</b>	12.4%	2.9%	-2.0%	2.3%	-3.1%	1.3%	5.4%	-10.9%	0.1%	9.2%	-1.9%	-3.2%	11.1%
<b>2016</b>	-2.5%	1.1%	-2.2%	3.8%	5.5%	5.6%	1.3%	2.2%	2.1%	-2.5%	0.4%	-1.4%	13.8%
<b>2017</b>	1.4%	3.1%	3.6%	-3.7%	1.4%	4.1%	-5.7%	-0.8%	3.9%	-0.5%	10.7%	3.8%	22.5%
<b>2018</b>	8.9%	2.9%	0.2%	-4.9%	-5.9%	-4.0%	-1.2%						-4.6%

Source: Bloomberg, MSCI, Tundra Fonder

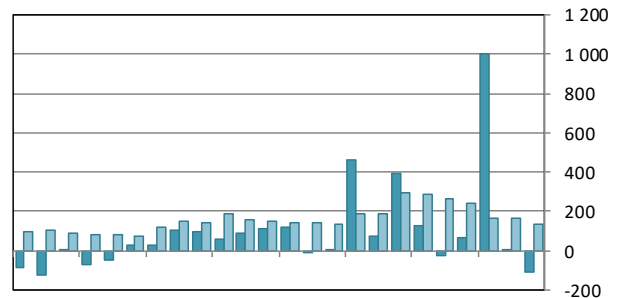
Capital invested in a fund may either increase or decrease in value and it is not certain that you will be able to recover all of your investment. Historical return is no guarantee of future return. The value of invested capital may vary substantially due to the composition of the fund and the investment process used by the fund manager. The Full Prospectus, KIID etc. are available on our homepage. You can also contact us to receive the documents free of charge. See full disclaimer on [www.tundrafonder.se](http://www.tundrafonder.se).

### Sector allocation



- Cash and other 3%
- Financials 23%
- Real Estate 18%
- Materials 14%
- Consumer Staples 11%
- Consumer Disc. 8%
- Energy 8%
- Industrials 7%
- Information Tech. 7%
- Health Care 1%
- Utilities 0%
- Telecom. Services 0%

### Foreign flows & daily turnover



Aug-16 Nov-16 Feb-17 May-17 Aug-17 Nov-17 Feb-18 May-18

■ Net foreign portfolio inflow, Vietnam (USDm)  
■ Avg daily traded value, Vietnam (USDm)

Largest holdings	Portfolio weight	Country	P/E 17	P/E 18E	Yield	Return 1M (EUR)
FPT Corp	6.5%	Vietnam	10.6	11.8	4.7%	1.4%
Hoa Phat Group JSC	6.5%	Vietnam	10.3	8.6	2.4%	-4.3%
Saigon Securities Inc	5.5%	Vietnam	16.4	11.8	-	-0.3%
Dat Xanh Real Estate Service	5.5%	Vietnam	13.0	8.2	1.7%	-5.8%
Masan Group Corp	5.1%	Vietnam	36.2	22.3	1.2%	4.8%
Vincom Retail JSC	5.0%	Vietnam	33.7	25.5	0.5%	2.9%
Ho Chi Minh City Dev Bank JSC	4.8%	Vietnam	14.0	13.1	-	-3.1%
Hoa Sen Group	4.6%	Vietnam	2.7	4.8	8.7%	-8.5%
LDG Investment JSC	4.5%	Vietnam	-	-	-	10.6%
Vietnam Dairy Products JSC	4.4%	Vietnam	24.5	24.9	3.5%	-2.7%

Best performers in July	Return (EUR)	Worst performers in July	Return (EUR)
TNG Investment & Trading JSC	12.6%	Lien Viet Post Bank JSC	-13.0%
PetroVietnam Transportation	10.6%	Nam Kim Steel JSC	-10.5%
LDG Investment JSC	10.6%	Hoa Sen Group	-8.5%
Phu Nhuan Jewelry JSC	9.1%	Saigon General Service JSC	-8.1%
Masan Group Corp	4.8%	Dong Hai JSC of Ben Tre	-8.1%

Facts	Risks and costs		
Inception date	2014-05-06	Active risk (Tracking error)	8.1%
Pricing	Daily	Active share **	63.7%
Manager	Tundra Fonder AB	Standard deviation	14.2%
Benchmark index	FTSE Vietnam TR (EUR)	Standard deviation, benchmark	14.6%
ISIN	SE0005797115	Beta	0.82
Bloomberg	TUNDVIC SS	Information ratio	-0.72
IBAN	SE195000000058648203945	Holdings	40
BIC	ESSESESS	Risk level	5 of 7 (refer to KIID for more info)
Custodian	SEB	Management fee/year	2.5%
Share classes currencies	SEK, USD, EUR	AuM	95.4 MEUR
Dividend	No dividend		

\* Risk indicators are based on monthly rolling 24 months of return data. \*\* Based on available index proxy.

Source: Bloomberg, MSCI, Tundra Fonder

Capital invested in a fund may either increase or decrease in value and it is not certain that you will be able to recover all of your investment. Historical return is no guarantee of future return. The value of invested capital may vary substantially due to the composition of the fund and the investment process used by the fund manager. The Full Prospectus, KIID etc. are available on our homepage. You can also contact us to receive the documents free of charge. See full disclaimer on [www.tundrafonder.se](http://www.tundrafonder.se).