



ABOUT THE FUND

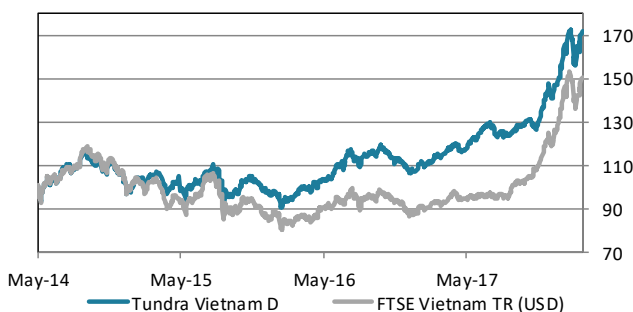
Vietnam is one of the fastest growing economies in South East Asia. Following the economic and political reforms under the Doi Moi Policy, launched in 1986, rapid economic growth and development transformed Vietnam from one of the world's poorest nations to a lower middle-income country. With a population of almost 100m and a high literacy rate, the country offers an attractive labour market. Vietnam has successfully attracted a large amount of Foreign Direct Investment (FDI) and has turned into a key manufacturing hub of mobile phones and other electronic products. The fund is managed according to Tundra's active stock picking philosophy and backed by a research office in Ho Chi Minh.

Investments are based on an ESG approach where each investment has to comply with the UN Global Compact with regards to human rights, labour rights, corporate governance and environmental impacts. The fund is registered in Sweden and is fully UCITS compliant. Read more about latest developments [here](#).

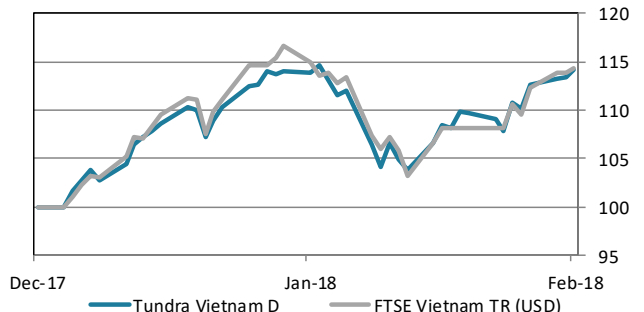
Return*	NAV (USD)	1 month	YTD	1 year	3 year	Inception
Tundra Vietnam D	26.41	0.9%	14.2%	51.1%	63.8%	71.9%
Benchmark	424.55	0.4%	14.3%	62.6%	47.4%	50.6%

* Fund returns calculated on SEK class converted to USD in order to provide the longest possible data set.

The fund vs benchmark (since inception)



The fund vs benchmark (YTD)



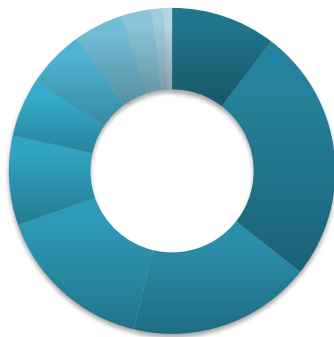
Fund monthly performance

	Jan	Feb	Mar	Apr	May	Jun	Jul	Aug	Sep	Oct	Nov	Dec	YTD
2014					4.6%	0.0%	3.1%	7.7%	-5.2%	0.1%	-4.1%	-6.6%	-1.2%
2015	4.3%	1.8%	-5.9%	6.1%	-4.4%	3.2%	4.5%	-9.8%	-0.3%	7.9%	-6.0%	0.0%	-0.3%
2016	-3.3%	1.6%	2.4%	4.1%	3.0%	5.1%	1.7%	2.0%	2.7%	-4.8%	-2.8%	-1.8%	9.8%
2017	3.8%	1.4%	4.4%	-1.6%	4.4%	5.8%	-2.9%	0.1%	3.4%	-1.8%	13.2%	4.5%	39.2%
2018	13.1%	0.9%											14.2%

Source: Bloomberg, MSCI, Tundra Fonder

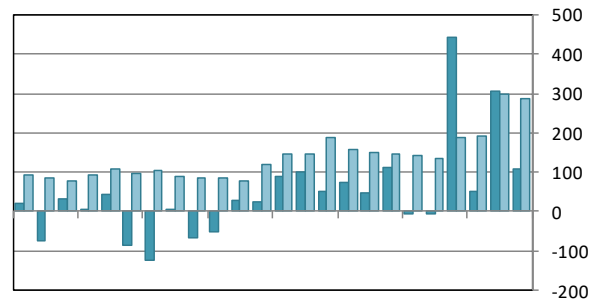
Capital invested in a fund may either increase or decrease in value and it is not certain that you will be able to recover all of your investment. Historical return is no guarantee of future return. The value of invested capital may vary substantially due to the composition of the fund and the investment process used by the fund manager. The Full Prospectus, KIID etc. are available on our homepage. You can also contact us to receive the documents free of charge. See full disclaimer on www.tundrafonder.se.

Sector allocation



- Cash and other 10%
- Real Estate 25%
- Financials 18%
- Materials 16%
- Consumer Staples 9%
- Industrials 6%
- Energy 6%
- Consumer Disc. 5%
- Information Tech. 3%
- Health Care 1%
- Utilities 1%
- Telecom. Services 0%

Foreign flows & daily turnover



Mar-16 Jun-16 Sep-16 Dec-16 Mar-17 Jun-17 Sep-17 Dec-17

■ Net foreign portfolio inflow, Vietnam (USDm)
■ Avg daily traded value, Vietnam (USDm)

Largest holdings	Portfolio weight	Country	P/E 17	P/E 18E	Yield	Return 1M (USD)
Vingroup JSC	6.8%	Vietnam	63.6	31.1	-	10.2%
Hoa Phat Group JSC	6.6%	Vietnam	12.9	12.0	2.3%	5.8%
Saigon Securities Inc	6.3%	Vietnam	20.9	19.3	-	8.0%
Vincom Retail Jsc	5.8%	Vietnam	44.6	30.8	0.8%	-3.0%
Dat Xanh Real Estate Service	5.6%	Vietnam	14.8	10.7	1.4%	9.0%
Hoa Sen Group	5.2%	Vietnam	5.3	5.6	4.1%	-7.0%
Masan Group Corp	3.9%	Vietnam	38.3	28.7	-	-3.3%
Vietnam Dairy Products JSC	3.9%	Vietnam	28.5	25.8	3.1%	-3.8%
Bank For Foreign Trade JSC	3.7%	Vietnam	35.6	28.0	1.4%	10.6%
Kinh Bac City Dev.	3.5%	Vietnam	8.3	7.8	-	-8.0%

Best performers in February	Return (USD)	Worst performers in February	Return (USD)
Vietnam JS Commercial Bank	23.3%	Nam Kim Steel JSC	-19.0%
Vndirect Securities Corp	20.1%	Petrovietnam Drilling & Wells	-16.3%
Vndirect Rts 2018	20.1%	Southern Gas Trading JSC	-12.8%
TNG Investment & Trading JSC	12.5%	Dong Hai JSC Of Bentre	-11.0%
Phu Nhuan Jewelry Js	11.7%	Vietnam Electric Cable Corp	-10.0%

Facts		Risks and costs	
Inception date	2014-05-06	Active risk (Tracking error)	8.6%
Pricing	Daily	Active share	64.7%
Manager	Tundra Fonder AB	Standard deviation	14.8%
Benchmark index	FTSE Vietnam TR (USD)	Standard deviation, benchmark	15.0%
ISIN	SE0005797123	Beta	0.82
Bloomberg	TUNDVIU SS	Information ratio	0.03
IBAN	SE945000000058648203953	Holdings	46
BIC	ESSESESS	Risk level	5 of 7 (refer to KIID for more info)
Custodian	SEB	Management fee/year	2.5%
Auditor	PWC	AuM	163.2 MUSD
Share classes currencies	SEK, USD, EUR	Dividend	No dividend

* Risk indicators are based on monthly rolling 24 months of return data.

Source: Bloomberg, MSCI, Tundra Fonder

Capital invested in a fund may either increase or decrease in value and it is not certain that you will be able to recover all of your investment. Historical return is no guarantee of future return. The value of invested capital may vary substantially due to the composition of the fund and the investment process used by the fund manager. The Full Prospectus, KIID etc. are available on our homepage. You can also contact us to receive the documents free of charge. See full disclaimer on www.tundrafonder.se.