

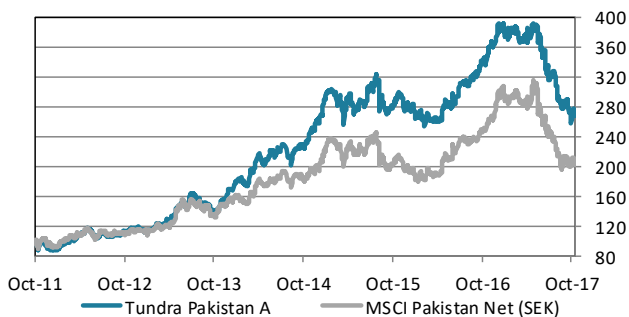


### ABOUT THE FUND

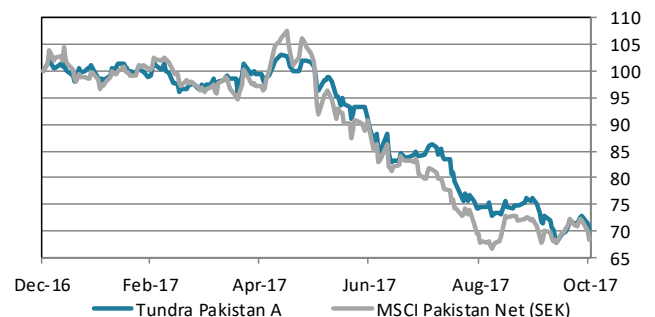
Tundra Pakistan Fund is a Pakistan specific equity fund. It is trying to capture Pakistan's future economic growth, the world's 6th most populous country, home to almost 200m people. Launched in October 2011, the fund has been one of the world's best performing equity funds. Pakistan's international media image has been that of a hotbed of terrorism and instability. Tundra, however, has found a young, skilled, fast-growing population, and some of the most exciting and cheap companies we have encountered during our years in emerging and frontier markets. Almost 600 companies are listed on the Pakistan Stock Exchange. The Pakistani equity market is one of the best performing market globally over the past 20 years but valuations are still among the lowest. The fund is managed according to Tundra's active stock picking philosophy. Investments are based on an ESG approach. Each investment must comply with the UN Global Compact with respect to human rights, labour rights, corporate governance and environmental impacts. The fund is registered in Sweden and is fully UCITS compliant. Read more about latest developments [here](#).

Return	NAV(SEK)	1 month	YTD	1 year	3 year	Inception
Tundra Pakistan A	267.81	-7.9%	-29.9%	-20.8%	13.1%	167.8%
Benchmark	5866.35	-5.4%	-31.7%	-19.0%	6.2%	101.2%

### The fund vs benchmark (since inception)



### The fund vs benchmark (YTD)



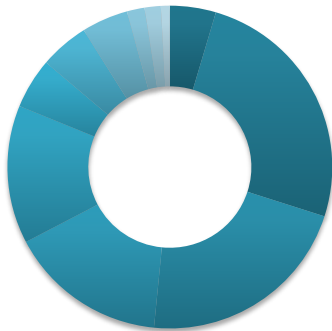
### Fund monthly performance

	Jan	Feb	Mar	Apr	May	Jun	Jul	Aug	Sep	Oct	Nov	Dec	YTD
<b>2011</b>										-6.2%	-1.0%	-5.7%	-12.5%
<b>2012</b>	7.1%	5.2%	6.8%	4.5%	1.7%	-7.2%	4.2%	1.6%	-1.9%	5.3%	4.1%	-2.2%	32.5%
<b>2013</b>	-0.4%	8.1%	-0.9%	6.8%	13.6%	-1.4%	9.4%	-9.4%	-4.1%	1.9%	8.9%	7.5%	44.7%
<b>2014</b>	9.7%	-4.9%	13.6%	4.3%	6.5%	0.2%	3.2%	-8.0%	8.1%	4.2%	5.3%	8.0%	60.6%
<b>2015</b>	12.2%	-3.4%	-7.7%	6.1%	-1.0%	1.6%	7.0%	-3.5%	-7.8%	5.7%	-3.2%	-1.1%	2.8%
<b>2016</b>	-2.2%	-3.0%	-0.8%	2.1%	5.3%	5.4%	5.7%	2.9%	2.3%	2.9%	6.7%	5.8%	37.9%
<b>2017</b>	-2.7%	1.9%	-1.7%	2.0%	-0.1%	-9.8%	-5.9%	-11.7%	2.3%	-7.9%			-29.9%

Source: Bloomberg, MSCI, Tundra Fonder

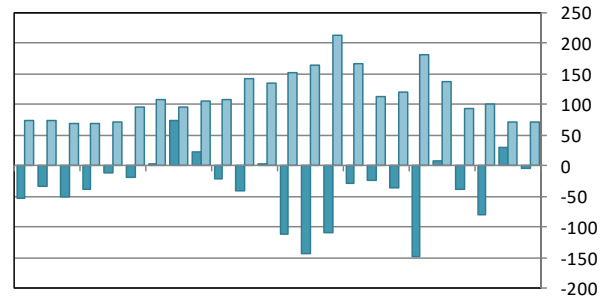
Capital invested in a fund may either increase or decrease in value and it is not certain that you will be able to recover all of your investment. Historical return is no guarantee of future return. The value of invested capital may vary substantially due to the composition of the fund and the investment process used by the fund manager. The Full Prospectus, KIID etc. are available on our homepage. You can also contact us to receive the documents free of charge. See full disclaimer on [www.tundrafonder.se](http://www.tundrafonder.se).

### Sector allocation



- Cash and other 5%
- Materials 25%
- Financials 22%
- Consumer Disc. 16%
- Consumer Staples 14%
- Health Care 5%
- Information Tech. 5%
- Utilities 5%
- Industrials 2%
- Real Estate 2%
- Energy 1%
- Telecom. Services 0%

### Foreign flows & daily turnover



Nov-15 Feb-16 May-16 Aug-16 Nov-16 Feb-17 May-17 Aug-17

■ Net foreign portfolio inflow, Pakistan (USDm)  
■ Avg daily traded value, Pakistan (USDm)

Largest holdings	Portfolio weight	Country	P/E 16	P/E 17E	Yield	Return 1M (SEK)
International Brands	8.8%	Pakistan	-	-	-	-
Lucky Cement	7.8%	Pakistan	10.5	11.1	2.8%	-11.6%
Daewoo Pak Express	6.7%	Pakistan	-	-	-	-
Systems Ltd	4.5%	Pakistan	15.8	10.7	3.1%	-7.9%
Meezan Bank Ltd	4.1%	Pakistan	12.8	10.0	5.2%	-9.7%
Habib Bank Ltd	3.4%	Pakistan	7.0	15.2	4.9%	-8.9%
Ferozsons Laboratories	3.2%	Pakistan	-	-	-	-6.2%
MCB Bank Ltd	3.0%	Pakistan	9.4	10.0	7.7%	-2.4%
Century Paper & Board Mills	2.8%	Pakistan	-	-	-	4.4%
Shezan International Ltd	2.7%	Pakistan	-	-	-	11.7%

### Best performers in October

Company	Return (SEK)
Shezan International Ltd	11.7%
Habib Sugar Mills Ltd	5.3%
Attock Petroleum Ord	4.7%
Century Paper & Board Mills	4.4%

### Worst performers in October

Company	Return (SEK)
Kohinoor Textile Mills Ltd	-21.2%
Gharibwal Cement Ltd	-21.1%
Pioneer Cement Ltd	-20.6%
Pak Elektron Ltd	-20.3%

### Facts

Inception date	2011-10-14
Inception price	100.0
Pricing	Daily
Manager	Tundra Fonder AB
Benchmark index	MSCI Pakistan Net (SEK)
Bank account	SEB 5851-10 76190
ISIN	SE0004211308
PPM	705806
Bloomberg	TUNDPK SS
Share classes currencies	SEK, USD, EUR
Dividend	No dividend

### Risks and costs

Active risk (Tracking error)	9.3%
Active share	71.9%
Standard deviation	17.0%
Standard deviation, benchmark	21.9%
Beta	0.71
Information ratio	-0.17
Holdings	45
Risk level	6 of 7 (refer to KIID for more info)
Management fee/year	2.5%
AuM	507.6 MSEK

\* Risk indicators are based on monthly rolling 24 months of return data.

Source: Bloomberg, MSCI, Tundra Fonder

Capital invested in a fund may either increase or decrease in value and it is not certain that you will be able to recover all of your investment. Historical return is no guarantee of future return. The value of invested capital may vary substantially due to the composition of the fund and the investment process used by the fund manager. The Full Prospectus, KIID etc. are available on our homepage. You can also contact us to receive the documents free of charge. See full disclaimer on [www.tundrafonder.se](http://www.tundrafonder.se).