

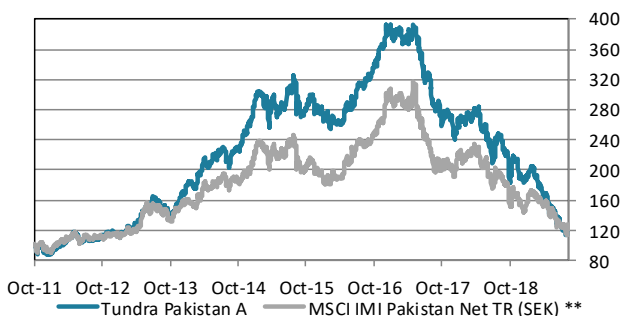


### ABOUT THE FUND

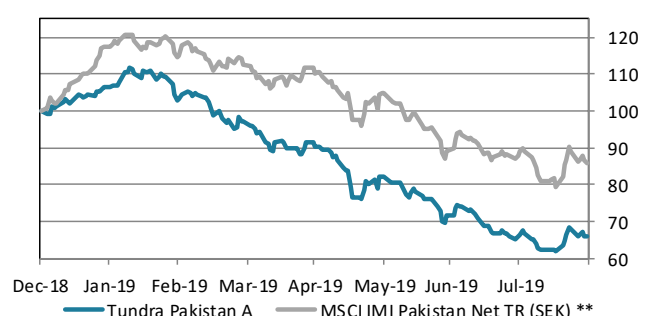
Tundra Pakistan Fund is a Pakistan specific equity fund. It is trying to capture Pakistan's future economic growth, the world's 6th most populous country, home to more than 200m people. Pakistan's international media image has been that of a hotbed of terrorism and instability. Tundra, however, has found a young, skilled, fast-growing population, and some of the most exciting and cheap companies we have encountered during our years in emerging and frontier markets. Almost 600 companies are listed on the Pakistan Stock Exchange. The Pakistani equity market is one of the best performing market globally over the past 20 years but valuations are still among the lowest. The fund is managed according to Tundra's active stock picking philosophy. Investments are based on an ESG approach. Each investment must comply with the UN Global Compact with respect to human rights, labour rights, corporate governance and environmental impacts. The fund is registered in Sweden and is fully UCITS compliant. Read more about latest developments [here](#).

Return	NAV(SEK)	1 month	YTD	1 year	3 year	Inception
Tundra Pakistan A	121.19	-1.2%	-34.2%	-49.1%	-62.2%	21.2%
Benchmark **	10576.63	-3.4%	-14.0%	-35.3%	-48.1%	22.6%

### The fund vs benchmark (since inception)



### The fund vs benchmark (YTD)



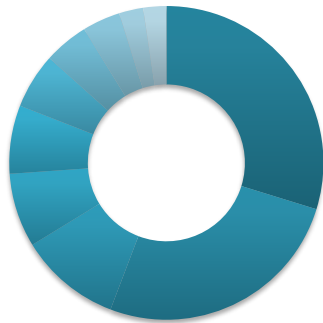
### Fund monthly performance

	Jan	Feb	Mar	Apr	May	Jun	Jul	Aug	Sep	Oct	Nov	Dec	YTD
<b>2011</b>										-6.2%	-1.0%	-5.7%	-12.5%
<b>2012</b>	7.1%	5.2%	6.8%	4.5%	1.7%	-7.2%	4.2%	1.6%	-1.9%	5.3%	4.1%	-2.2%	32.3%
<b>2013</b>	-0.4%	8.1%	-0.9%	6.8%	13.6%	-1.4%	9.4%	-9.4%	-4.1%	1.9%	8.9%	7.5%	44.8%
<b>2014</b>	9.7%	-4.9%	13.6%	4.3%	6.5%	0.2%	3.2%	-8.0%	8.1%	4.2%	5.3%	8.0%	60.6%
<b>2015</b>	12.2%	-3.4%	-7.7%	6.1%	-1.0%	1.6%	7.0%	-3.5%	-7.8%	5.7%	-3.2%	-1.1%	2.8%
<b>2016</b>	-2.2%	-3.0%	-0.8%	2.1%	5.3%	5.4%	5.7%	2.9%	2.3%	2.9%	6.7%	5.8%	37.9%
<b>2017</b>	-2.7%	1.9%	-1.7%	2.0%	-0.1%	-9.8%	-5.9%	-11.7%	2.3%	-7.9%	-0.1%	-7.1%	-34.9%
<b>2018</b>	6.0%	3.1%	1.6%	1.2%	-8.0%	-6.9%	-1.7%	1.1%	-6.1%	-2.5%	-7.1%	-9.1%	-26.0%
<b>2019</b>	7.1%	-3.6%	-5.9%	-6.8%	-9.1%	-12.9%	-7.0%	-1.2%					-34.2%

Source: Bloomberg, MSCI, Tundra Fonder

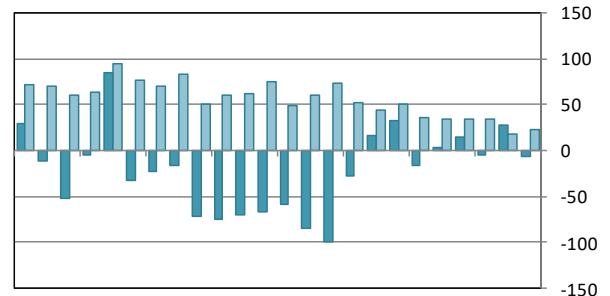
Capital invested in a fund may either increase or decrease in value and it is not certain that you will be able to recover all of your investment. Historical return is no guarantee of future return. The value of invested capital may vary substantially due to the composition of the fund and the investment process used by the fund manager. The Full Prospectus, KIID etc. are available on our homepage. You can also contact us to receive the documents free of charge. See full disclaimer on [www.tundrafonder.se](http://www.tundrafonder.se).

### Sector allocation



- Cash and other 0%
- Financials 30%
- Materials 26%
- Utilities 10%
- Energy 8%
- Consumer Disc. 7%
- Consumer Staples 6%
- Health Care 5%
- Real Estate 4%
- Industrials 2%
- Information Tech. 2%
- Communication Services 0%

### Foreign flows & daily turnover



Sep-17 Dec-17 Mar-18 Jun-18 Sep-18 Dec-18 Mar-19 Jun-19

■ Net foreign portfolio inflow, Pakistan (USDm)  
■ Avg daily traded value, Pakistan (USDm)

Largest holdings	Portfolio weight	Country	P/E 19E	P/E 20E	Yield	Return 1M (SEK)
Lucky Cement Ltd	7.9%	Pakistan	9.6	10.0	2.7%	-4.0%
Hub Power Co Ltd	7.6%	Pakistan	6.3	3.6	6.1%	-3.1%
United Bank Ltd	7.1%	Pakistan	7.4	4.9	8.7%	-7.8%
Shezan International Ltd	5.7%	Pakistan	-	-	-	-
Habib Bank Ltd	4.7%	Pakistan	8.6	4.6	5.1%	-5.5%
Meezan Bank Ltd	4.6%	Pakistan	6.2	4.8	6.0%	-5.0%
D.G. Khan Cement Co Ltd	4.2%	Pakistan	6.6	9.5	4.7%	13.6%
Oil & Gas Development Co Ltd	4.1%	Pakistan	4.0	3.8	11.4%	-14.4%
TPL Properties Ltd	3.9%	Pakistan	-	-	-	-
MCB Bank Ltd	3.8%	Pakistan	8.1	6.2	9.9%	0.2%

Best performers in August	Return (SEK)	Worst performers in August	Return (SEK)
International Steels Ltd	29.7%	Pakistan Petroleum Ltd	-19.7%
Kohinoor Textile Mills Ltd	21.1%	Tri-Pack Films Ltd	-17.6%
EFU Life Assurance Ltd	19.6%	Hum Network Ltd	-16.6%
Pioneer Cement Ltd	19.3%	Oil & Gas Development Co Ltd	-14.4%
D.G. Khan Cement Co Ltd	13.6%	K-Electric Ltd	-8.9%

Facts		Risks and costs	
Inception date	2011-10-14	Active risk (Tracking error)	12.3%
Inception price	100.0	Active share	58.5%
Pricing	Daily	Standard deviation	17.8%
Manager	Tundra Fonder AB	Standard deviation, benchmark	22.6%
Benchmark index **	MSCI IMI Pakistan Net TR (SEK)	Beta	0.66
Bank account	SEB 5851-10 76190	Information ratio	-0.80
ISIN	SE0004211308	Holdings	34
PPM	705806	Risk level	6 of 7 (refer to KIID for more info)
Bloomberg	TUNDPK SS	Management fee/year	2.5%
Share classes currencies	SEK, USD, EUR	AuM	165.8 MSEK
Dividend	No dividend		

\* Risk indicators are based on monthly rolling 24 months of return data. \*\* The fund changed benchmark April 1st, 2019

Source: Bloomberg, MSCI, Tundra Fonder

Capital invested in a fund may either increase or decrease in value and it is not certain that you will be able to recover all of your investment. Historical return is no guarantee of future return. The value of invested capital may vary substantially due to the composition of the fund and the investment process used by the fund manager. The Full Prospectus, KIID etc. are available on our homepage. You can also contact us to receive the documents free of charge. See full disclaimer on [www.tundrafonder.se](http://www.tundrafonder.se).